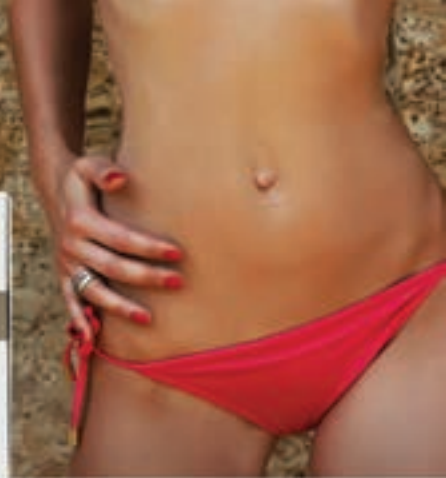


Cafein



●●● Anti-cellulite solution

IT Pharma
INNOVATING TECHNOLOGY PHARMA

Description

Caffeine is the perfect partner to improve the appearance of those parts of the body that are susceptible to fat accumulation, such as the hips and stomach. It also promotes correct blood circulation, hydrates, protects and is a powerful natural antioxidant. In the concentrations in which it is used, its main active ingredient blocks the phosphodiesterase enzyme responsible for the destruction of AMPc, a chemical mediator involved in the breakdown of triglycerides.

So, by increasing the time that the AMPc remains in the system and, therefore, the time it acts on the product application area, a lipolytic effect is generated, resulting in an important reduction in fat, leaving the skin smooth and pucker-free.

APPLICATION

Cafein by IT Pharma is an ideal product for combining with cosmetic treatments for localised fat, cellulite or for treating under eye bags and crow's feet.

Basically, Cafein can either be applied topically to the skin or else through electromedical systems for the transdermal delivery of substances. Depending on the selected device and whether or not Cafein is mixed with another product, the use of one vial per session is recommended, applied by massaging the area to be treated in circular, upward movements. The absorption of the product depends on the particular skin characteristics of each patient.

The recommended procedure is a standard treatment, always depending on the specific case and under the supervision of the appropriate professional, which could be two high-impact sessions the first and second weeks of treatment, 1 session the third week and the final session in the fourth week. Subsequently, there could be a monthly maintenance session.

HOW IS IT USED?



Electroporation treatment



Micro-needling skin Dermopointer



Turtlepin

Active ingredients

CAFFEINE 2%: Caffeine is one of the substances that best penetrates the skin. What's more, it's able to reduce the capacity of adipose tissue to accumulate fat and it accelerates its degradation process.

PACKAGING



10, 5 ML VIALS

COMPOSITION



Aqua / Propylen Glycol / Caffeine

RECOMMENDED TREATMENTS

● It can be applied to any part of the body

CROW'S FEET AND UNDER EYE BAGS

- 4 ml HA Lifting
- 5 ml Renovation Lift
- 2 ml Caffein
- Dermapointer

LOCALISED FAT

- 2 ml Caffein
- 5 ml Phospha
- 2 ml Liposintrol
- Dermopointer

CELLULITE

- 2 ml Caffein
- 5 ml L carnitina
- Electroporation

DRAINAGE

- 4 ml Caffein
- 5 ml Cynarin
- 2 ml Lipophase
- Electroporation

DOUBLE CHIN

- 2 ml Caffein
- 5 ml Inbiofat
- Electroporation

